



MANUFACTURER OF INNOVATIVE
MOBILE KAMERA & LIGHT BOXES

WWW.SECURITBOX.COM



WELCOME TO SECURITBOX

We, SEBA Europa GmbH, are the first company in the German-speaking world - Germany, Austria and Switzerland - to specialise in the development and production of innovative mobile security boxes, video towers and telescopic masts. Our product line includes high-quality security boxes and telescopic masts, which we offer in a unique, specially developed design.

Our company has a production facility in Turkey with 3000 square metres and more than 20 employees, where all basic processes such as cutting, edging and preparation of components are manufactured in a modular system. The production process is continued in our production facility in the historic imperial city of Aachen, Germany, on 2000 square metres with a team of 14 employees.

The metal components are precisely assembled in Aachen and then hot-dip galvanised at ZINQ, Germany's and Europe's largest galvanising company. Depending on customer requirements, the mobile SECURITBOX systems are equipped in our departments with or without technology.

Our location in the border triangle, close to the Netherlands and Belgium, offers us a strategically favourable position in Europe and enables efficient logistics solutions



**Innovative manufacturer of mobile camera
and lighting masts for the security industry**



INNOVATIVE MOBILE SOLUTIONS FOR THE SECURITY INDUSTRY



We know what is important

We have been an integral part of the security industry since 1997. With our many years of experience in security technology and a strong network of leading device manufacturers, we know exactly what is important when developing mobile surveillance boxes and control cabinets.

Our focus is on optimizing the compatibility of our products with the systems of leading manufacturers, including cameras, mounting boxes, motion detectors, sirens, and loudspeakers.

Every detail is carefully planned and tested before a model goes through production to ensure the highest quality and reliability.

Our goal:

Developing innovative mobile series that can be seamlessly integrated with a wide range of devices. This allows us to offer our customers a wide range of products - either as a complete package or for simple self-installation.





ROBUST, SAFE, VERSATILE



**MADE in
GERMANY**

HIGHEST QUALITY STANDARDS

01

All our products are carefully manufactured in accordance with the strict requirements of **DIN ISO 9001**.

02

They also fulfil the European **CE standards** and guarantee maximum safety and quality.

03

Every product is hot-dip galvanised in Europe's largest galvanising plant, ZINQ. According to standards: **DIN EN ISO 1461 / DIN EN ISO 14713 und DIN EN ISO 10684**

04

In addition, the side walls, doors and roofs are powder-coated to **DIN EN 15773** to ensure maximum durability and resistance to all weather conditions.

05

All mobile switch cabinet technology is manufactured in accordance with German VDE and DIN standards.



VARIETY OF MOBILE SOLUTIONS

The SECURITBOX series - Versatile solutions for every requirement

The SECURITBOX series offers the right solution for every challenge. Whether easily transportable surveillance solutions such as our SB-Flex series or fully self-sufficient systems from the Solar series - we have developed the ideal solution for every area of application. Maximum flexibility and efficiency always take centre stage.



SB-FLEX

The Flex series weighs 85 kg, measures 50 × 50 × 110 cm and reaches a height of 235 cm, which can be extended to 295 cm. It is equipped with a removable handle and wheels for easy transport. It also has extendable stabiliser feet as standard, which ensure additional stability.



SB4-MINI

The SB4 Mini series weighs 200 kg, measures 80x60x125 cm and reaches a height of 219 cm, which can be extended up to 420 cm. It has two lockable doors that provide sufficient space for backup batteries and mobile technology.



THE SMALL SERIES

THE VIDEO AND LIGHTING MASTS

All our Securitbox models offer the following features:

- Outstanding robustness and unrivalled stability
- Doors, side walls and roofs are additionally powder-coated to ensure optimum protection and durability.
- The models are available with or without a lockable roof, depending on individual requirements.
- Battery protection cover for extra protection and safety.
- Lockable doors for increased component security.
- All series are equipped with forklift pockets, pallet truck inlets and crane eyes for easy transport.

Customized switch cabinets are available as an option and are also produced in-house to optimally meet individual requirements.





SB6- PRO

The Pro series weighs 430 kg and has a height of 230 cm. It is characterised by its solid and robust construction, which offers maximum stability and reliability even under demanding conditions.



SB6-EASY

The Easy series weighs 320 kg and is 220 cm high. It impresses with its professional design and offers an ideal combination of stability and mobility for a wide range of applications.



SB6-SIMPLE

The Simple series weighs 315 kg and has a height of 329 cm. Despite its simple design, it offers robust stability and reliability, making it suitable for a wide range of applications. The telescopic mast

THE STANDARD SERIES

THE VIDEO AND LIGHTING MASTS

All our SECURITBOX models offer the following features:

- Climbing protection for maximum safety.
- Doors, side walls and roofs are also powder-coated to ensure optimum protection and durability.
- The models are available with or without a lockable roof, depending on individual requirements.
- Battery protection cover for extra protection and safety.
- Lockable doors for increased component security.
- All series are equipped with forklift pockets, pallet truck inlets and crane eyes for easy transport.
- Customized switch cabinets are available as an option and are also produced in-house to optimally meet individual requirements.

All series are available with or without a lockable roof!



SB- SOLAR

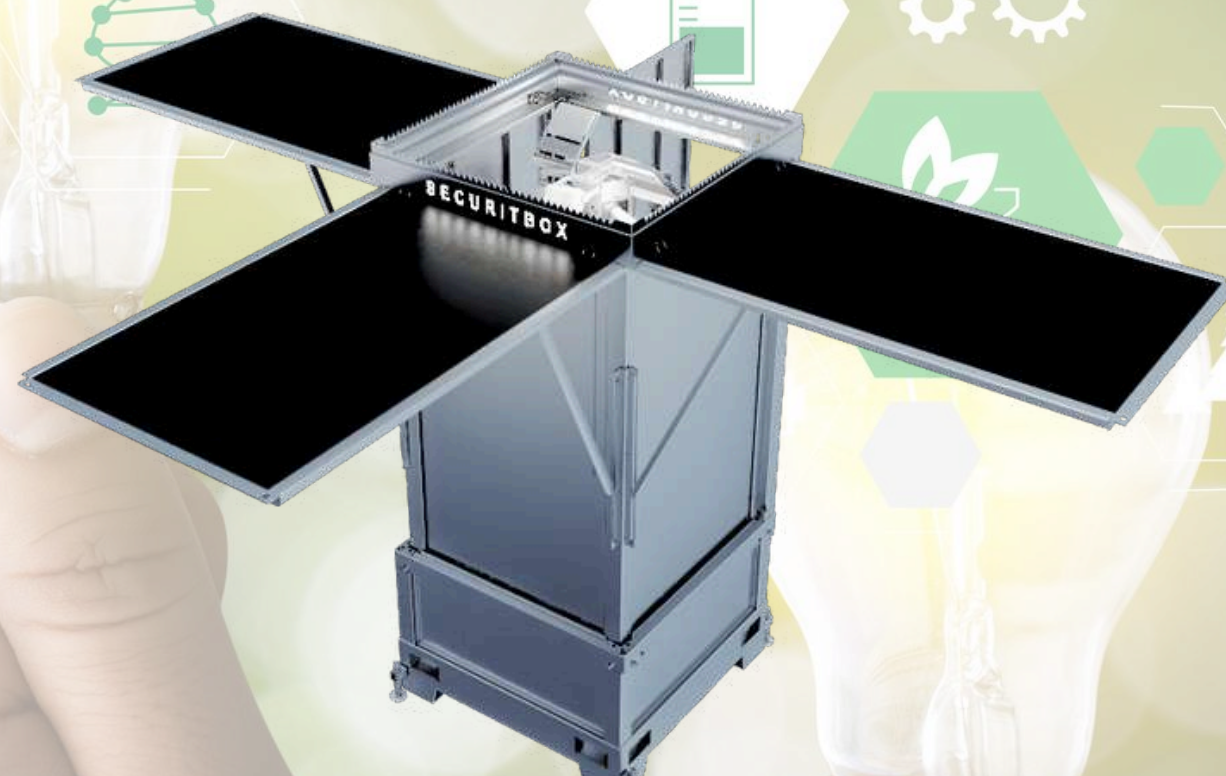
The Solar series weighs 595 kg and has a height of 265 cm. It is designed to offer maximum efficiency and self-sufficiency, ideal for use in areas without an external power supply.



The Solar series is available with solar panels as a partially self-sufficient solution or optionally with a fuel cell for a fully self-sufficient supply.'



The solar tower can be operated completely independently. In combination with three solar modules and a fuel cell, it offers an environmentally friendly and low-noise solution for monitoring and lighting. Ideal for use in areas without a power supply, the Solar Tower ensures maximum efficiency and sustainability.



THE MOST STABLE AND EFFECTIVE VIDEO AND LIGHTING TOWER ON THE MARKET

Our solar video and light tower sets new standards in terms of stability and effectiveness. Thanks to its robust construction and the optimised energy supply through highly efficient solar panels, it is the best choice for choice for reliable surveillance and lighting - even under the most demanding conditions.

This tower combines state-of-the-art technology with the highest level of robustness in order to remote or difficult to access areas to function reliably. The robust construction ensures exceptional stability, while the extendable precision mast, which can be adjusted up to 6 metres height of up to 6 metres, ensures comprehensive coverage and optimum visibility.

**ENVIRONMENTALLY CONSCIOUS
AND SUSTAINABLE**

SIMPLE TRANSPORT OF SECURITBOXES



MODEL SB13 - TRANSPORT TRAILER

The SB13 model with the innovative lifting fork trailer makes transporting the SECURITBOX series simple and efficient. Thanks to the 'load, secure and drive' principle, it enables independent and flexible use at any desired location.

The SB13 is a prime example of mobility and flexibility in the field of mobile surveillance solutions. The specially developed lifting fork trailer allows particularly uncomplicated handling, making the box easy to transport and quick to put into operation.

This design makes the SB13 the ideal choice for applications where quick installation and mobility are crucial, such as construction sites, events or temporary surveillance zones. Despite its mobility, it remains robust and reliable, even under demanding conditions.

Thanks to its sophisticated design and low installation effort, the SB13 is the perfect solution for anyone who needs a fast, reliable and mobile surveillance solution.



VERSATILE INSTALLATION OPTIONS FOR SECURITBOXES

CUSTOMISED QUALITY - PRECISION AND RELIABILITY IN EVERY DETAIL

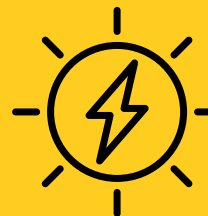
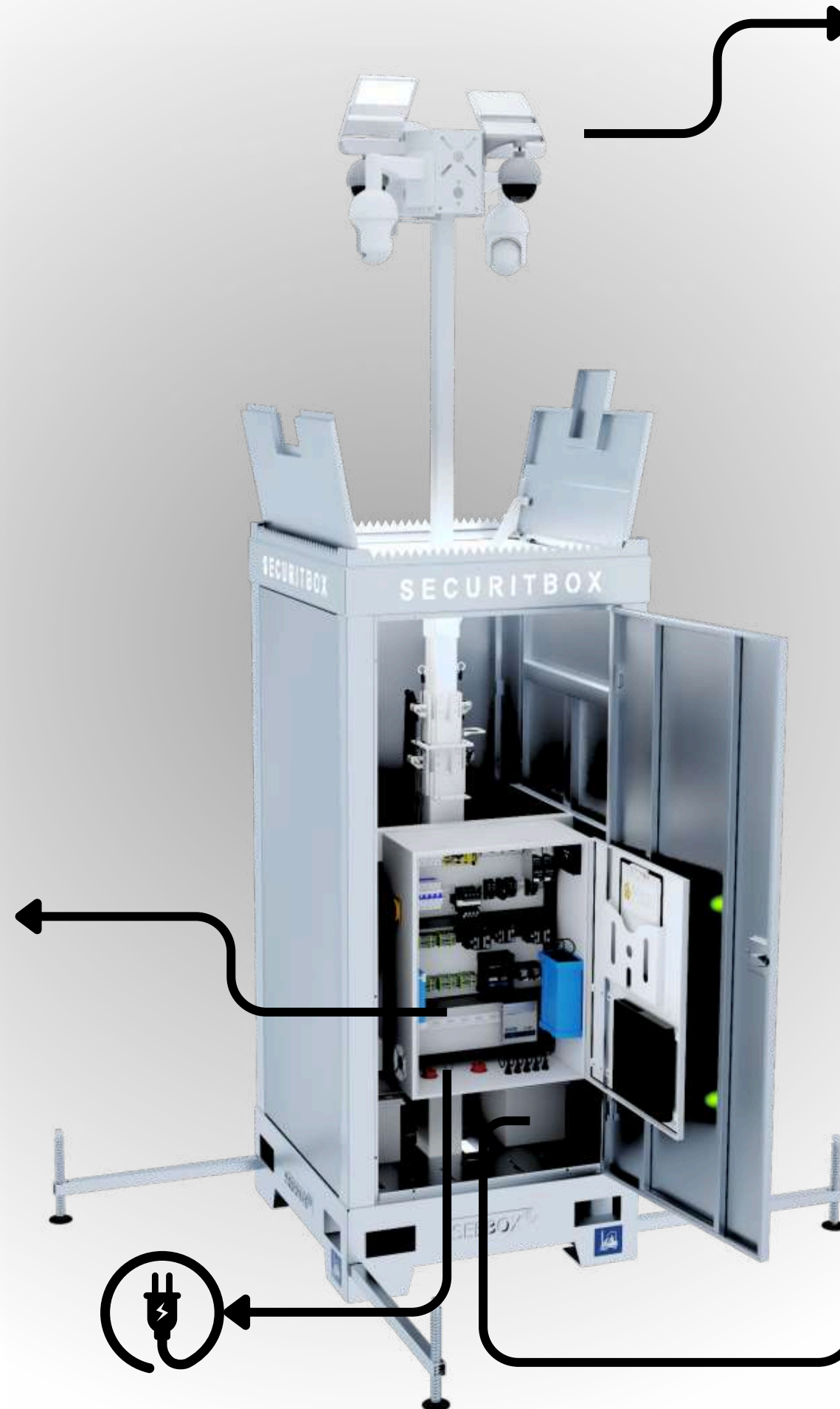
Im Inneren befindet sich das Herzstück der gesamten mobilen Technologie. Die Schaltschränke für die mobile Überwachungstechnik werden in unserem Unternehmen maßgeschneidert und passgenau für die SECURITBOXEN gefertigt.

Der beleuchtete Technikschränk enthält sämtliche notwendige Hardware, darunter Ladegeräte, Wechselrichter, Netzteile, PoE-Switches, Lüfter, Schalter und Sicherungen, die nach strengen deutschen DIN-Normen installiert werden.

Alle verwendeten Komponenten sind industrielle Hardware, die für den Einsatz unter extremen Bedingungen ausgelegt ist, um höchste Zuverlässigkeit und Langlebigkeit zu gewährleisten.

there is a variety of installation and application possibilities such as:

- CCTV cameras,
- Radio link,
- WLAN hotspot
- lighting
- Antenna for 3G,4G,5G
- Loudspeaker
- PIR detector
- Alarm system
- Solar & fuel cell
- and much more...



EXAMPLE
LOCATIONS

MOBILE
SOLUTIONS
FOR THE
WORLD -
FLEXIBILITY
AND
SECURITY
EVERYWHERE



CONSTRUCTION SITE SAFETY



CAR DEPOT



SOLAR PARKS



FLEXIBLE,
FAST,
SAFE

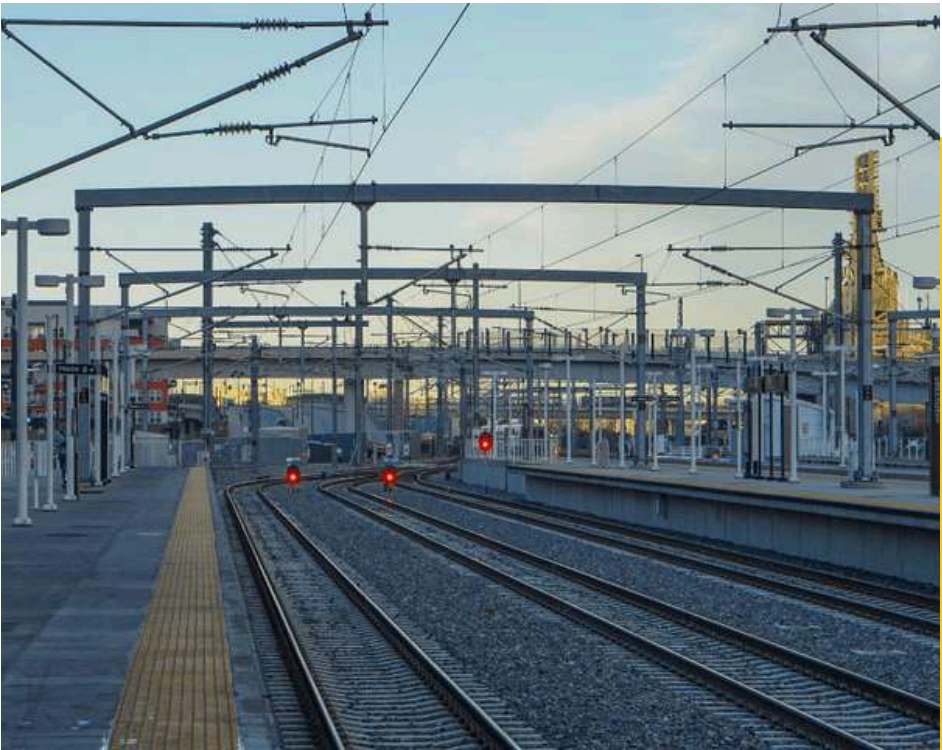


The video tower offers versatile application options and is ideal for locations where no fixed installation or infrastructure is available. This flexible solution can be deployed quickly and easily in a wide variety of locations to ensure surveillance and security without a great deal of effort.

EVENTS & EVENT



RAILWAY STATION AND TRACK CONSTRUCTION



LOCATIONS OF MOBILE SECURITBOXES AND THEIR ADVANTAGES

Mobile surveillance towers offer a wide range of applications, with construction sites of all kinds being among the most common locations. They are a flexible and efficient solution for the security and surveillance of a wide range of areas. The most important advantages are listed below.



MOBILE MONITORING: EFFICIENT AND SECURE

SOME ADVANTAGES:

- **Cost efficiency:**

Up to 70% cheaper than a security guard.

- **24/7 monitoring:**

Worldwide access to all monitored properties in real time.

- **Speaking to offenders:**

Directly address potential perpetrators via integrated loudspeakers.

- **Preservation of evidence:**

Verlässliche Speicherung von Videomaterial zur Dokumentation und Beweissicherung.

- **No risk for security personnel:**

No risk to the physical integrity of personnel.

- **High flexibility:**

They are quickly set up and ready for use

- **Deterrence of criminal offences:**

The presence of surveillance towers deters potential offenders.

- **Integration of lighting:**

Ideal for use at night or in poorly lit areas.

- **Advertising space:**

Possibility to display your own advertising messages on the boxes.

- **Many possible uses**

Possibility of attaching your own advertising messages to the boxes.

The mobile Securitbox offers numerous advantages and can also be used flexibly for various technical purposes



OUR DISTRIBUTORS AND PARTNERS



Our company offers high quality and innovative mobile solutions for the security industry. You can purchase our products through our distributors. Of course, our products are also available to customers who are not registered through our distributors.

For project enquiries and collaborations, please contact either a distributor you trust or us directly. Together with our partners, we will fulfil your requests in the best possible way.

OUR DISTRIBUTORS & DEALERS





SECURITBOX
SEBA EUROPA GmbH

WWW.SECURITBOX.COM



INTERNATIONAL SHIPPING AND PARTNER NETWORK

We already deliver worldwide and work successfully with distributors and system integrators in various countries.

Our partner network in Europe, Asia and Africa is constantly growing. The countries to which we already deliver include Germany, Austria, Switzerland, Portugal, Albania, Greece, the Netherlands, Belgium, Luxembourg, England, Turkey and Dubai.

This network of partnerships is constantly expanding so that we can always offer our customers global and customised solutions.



**TOGETHER WE MAKE
THE WORLD SAFE**



CONTACT US

Please contact us for further information and partner enquiries.



+49 (0) 241 - 400 80 99



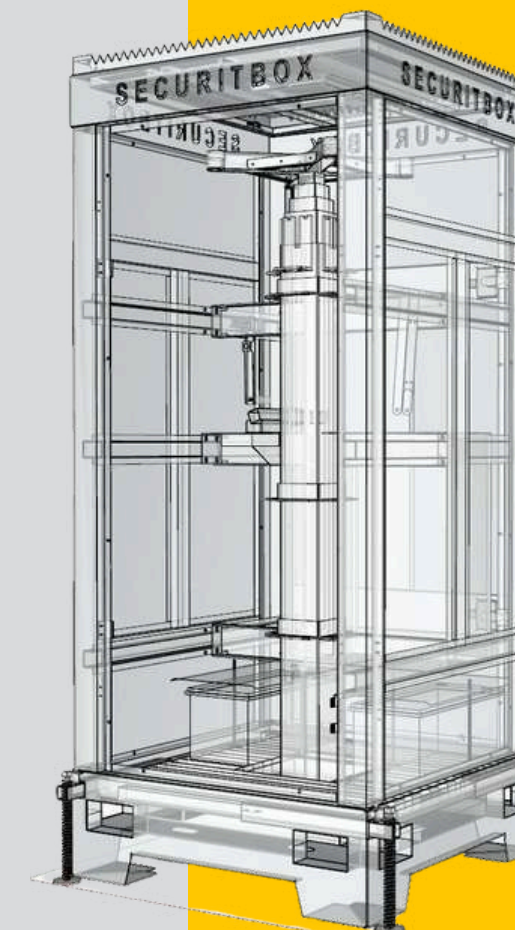
info@securitbox.com



**Rudolf Straße 1-7
52070 Aachen / Germany**



www.securitbox.com



THANK YOU



WWW.SECURITBOX.COM



Manufacturer of innovative mobile security boxes

